



9 Albert Embankment, London
SE1

GARTON JONES.COM



9 Albert Embankment, London , SE1

GARTON JONES.COM

9 Albert
Embankment
London
SE1 7SP

Sales +44 (0) 20 7735 1888
nineelms@gartonjones.com
www.gartonjones.com

£750 Per Week

A bright and spacious 2 bedroom, 2-bathroom (1 en-suite) duplex apartment of 764sq.ft (71sq.m) available to rent in 9 Albert Embankment, a popular, modern development located on the banks of the River Thames. The property offers an open plan reception room with modern fully integrated kitchen, 2 full width terraces both enjoying amazing views of the London.

Residents of 9 Albert Embankment have the added benefit of a 24-hour concierge and an on-site convenience store, and situated in a prime location, this property provides easy access to all the amenities and attractions that London has to offer. Transport links are very good with Vauxhall, Waterloo and Westminster Rail and Tube services all within a reasonable walking distance.

Please note furniture may differ to that shown in the current photos.

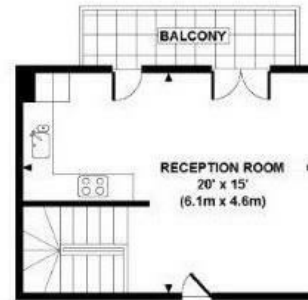
- Electricity Supply — Mains | Water Supply — Mains | Sewerage — Mains | Heating — Electric Radiators
- Broadband & Mobile Signal : Check Coverage via Ofcom
- Parking: Available via Separate Agreement
- Lift Access
- Building Safety: EWS1 Available on Request
- Council Tax Band E (London Borough of Lambeth)
- 5 Week Security Deposit
- Holding deposit equivalent to 1 week of rent
- Rent to be payable monthly in advance
- EPC Rating C (77)

- 2 Bedrooms
- 764sq.ft (71sq.m)
- Duplex Apartment
- Stunning Views of London
- 2 Balconies
- 24 Hour Concierge
- 2 Bathrooms (1 En-Suite)
- Secure Underground Parking (via Separate Agreement)
- On-Site Convenience Store
- 0.5 Miles to Vauxhall Station

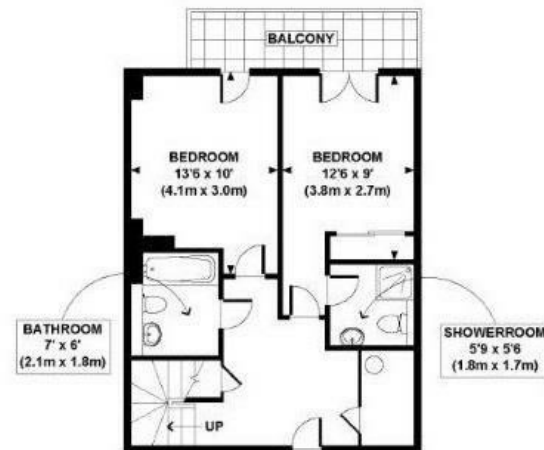


EPC certificate available on request.

ALBERT EMBANKMENT



EIGHTH FLOOR
GROSS INTERNAL
FLOOR AREA 300 SQ FT



SEVENTH FLOOR
GROSS INTERNAL
FLOOR AREA 464 SQ FT

APPROX. GROSS INTERNAL FLOOR AREA 764 SQ FT / 71 SQ M

